



**DELONIX**  
— HOMES —

# Introducing **THE SEQUOIA** signature design

---

This 3062 sq ft two-storey with basement, is smart, stylish and family oriented. One of our most popular floor plans, The Sequoia is bold and beautiful. The stunning foyer sets the stage with 20ft ceilings. The main floor features a large chefs kitchen, an oversized island and neighbouring butlers pantry. The living room is the perfect family setting with large windows welcoming ample natural light. Upstairs offers a luxurious master suite and two large childrens bedrooms. A second-floor laundry keeps functionality in mind. A spacious at-home office and basement ready for additional development, complete this perfect family home.

The Sequoia is one of our award winning Best Production home model.

To learn how The Sequoia can be personalized to fit your life please contact us.

# OUR SIGNATURE HOMES

*Delonix Homes has created a series of signature floor plans designed to inspire you.*

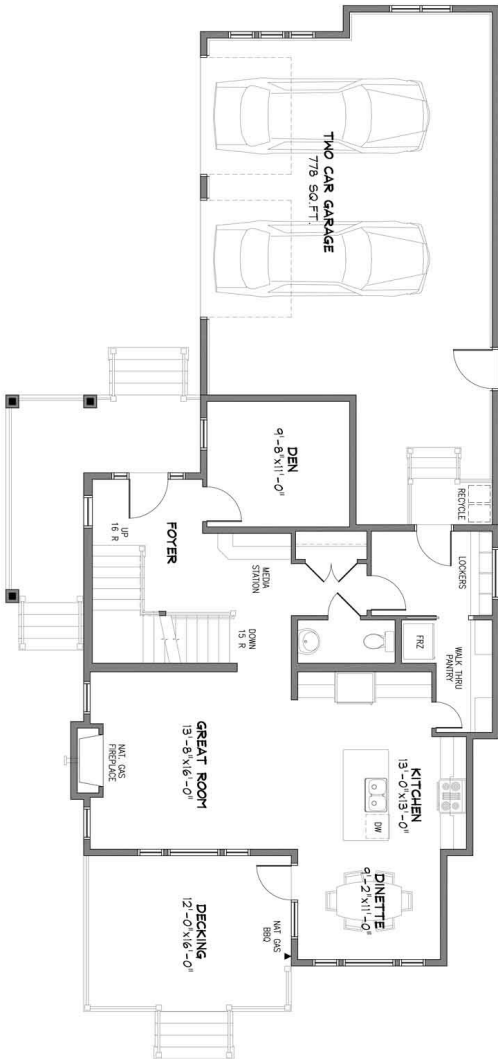
Each of our plans feature the best of curb appeal, functionality and natural light. Our homes have been carefully planned with distinct entry, living and sleeping spaces, large kitchens and dining areas, beautiful sight lines, luxurious bathrooms, and utility zones that offer storage solutions for life's clutter.

Every home should tell the story of the family that lives there. Our build starts with getting to know you and understanding your style. Choose one of our thoughtfully designed signature plans and personalize it by selecting your preferred layout and exterior. We'll incorporate best practices in energy efficiency and construction techniques, and help you select your interior features and finishes from a carefully edited menu to create a home that feels timeless and fresh.

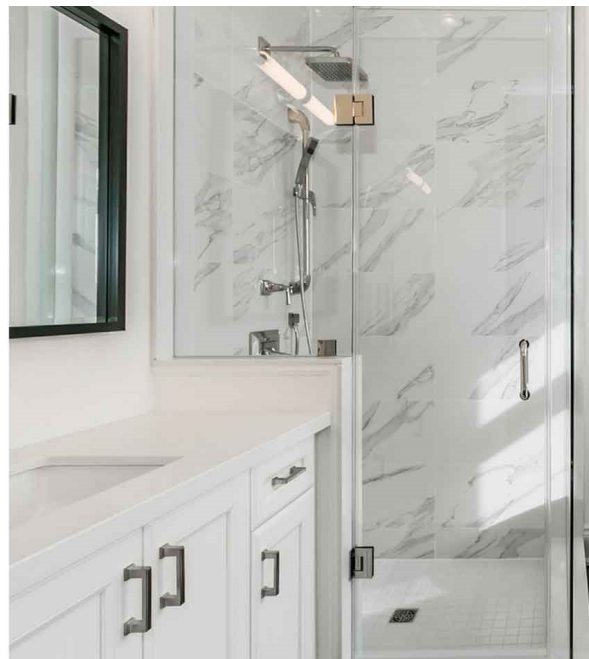
## Floor Plan

Main floor: 1062 sf

Second floor: 950 sf







---

Exterior

---



**DLH** DELONIX  
— HOMES —