



DELONIX
— HOMES —

Introducing **THE LARCH** signature design

This 3,273 sf two-story home might possibly be the perfect family home. The Larch delivers style and function as our feature modern farmhouse design, with a bright and open main floor and four bedrooms on the second. The main floor boasts a well planned kitchen, dining and great room. Beautiful architectural windows showcase the valley below and lead to a four season patio. A smart locker room and laundry design provide ample storage for lifes clutter. A luxurious ensuite and walk in closet with three additional bedrooms provide generous living for the whole family.

To learn how The Larch can be personalized to fit your life please contact us.

OUR SIGNATURE HOMES

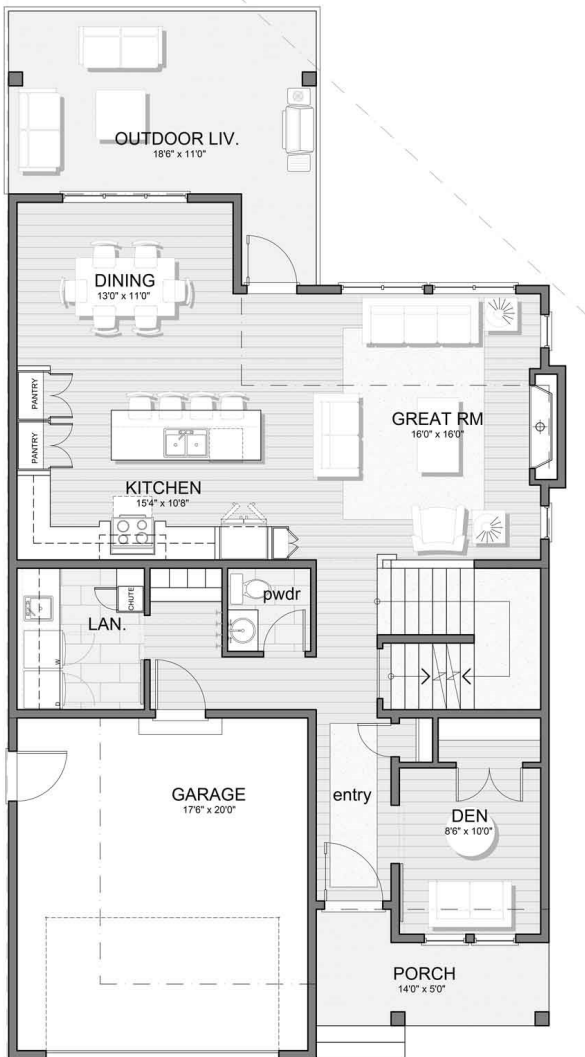
Delonix Homes has created a series of signature floor plans designed to inspire you.

Each of our plans feature the best of curb appeal, functionality and natural light. Our homes have been carefully planned with distinct entry, living and sleeping spaces, large kitchens and dining areas, beautiful sight lines, luxurious bathrooms, and utility zones that offer storage solutions for life's clutter.

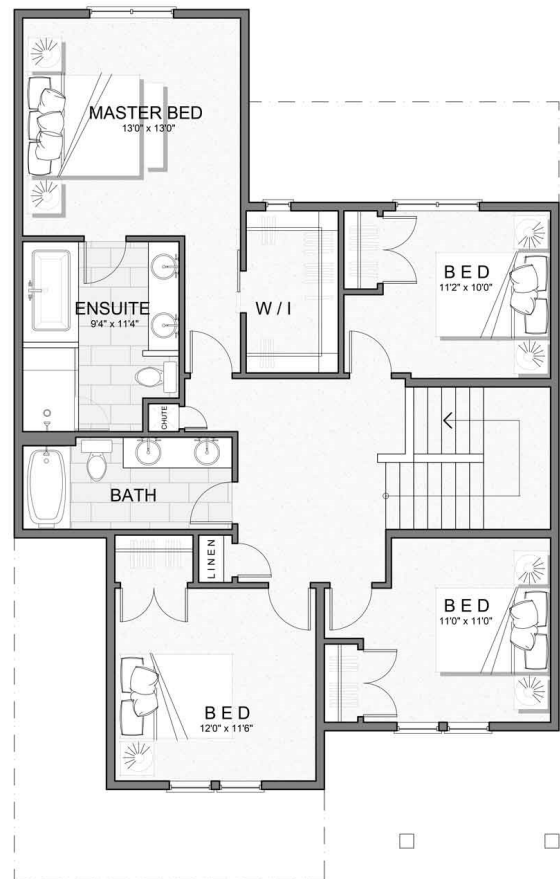
Every home should tell the story of the family that lives there. Our build starts with getting to know you and understanding your style. Choose one of our thoughtfully designed signature plans and personalize it by selecting your preferred layout and exterior. We'll incorporate best practices in energy efficiency and construction techniques, and help you select your interior features and finishes from a carefully edited menu to create a home that feels timeless and fresh.

Floor Plan

Main floor: 1093 sf



Second floor: 1087 sf





Exterior



DH DELONIX
— HOMES —