



Introducing **THE HEMLOCK** signature design

Family and entertaining are at the heart of this 3078 sf two story home. The Hemlocks main design concept is Western Craftsman. 16ft tall living room walls and endless windows flood natural light throughout and frame a picturesque view of the valley. Features include: an oversized kitchen, butlers pantry and tasteful use of natural woods throughout. Functional design concepts feature a home office, flex space for kids, music or exercise area and 2nd floor laundry. The master suite is truly an oasis with oversized bath/shower and dressing room. The two secondary bedrooms are generously sized, comfortably able to fit 2 beds each.

To learn how The Hemlock can be personalized to fit your life please contact us.



OUR SIGNATURE HOMES

Delonix Homes has created a series of signature floor plans designed to inspire you.

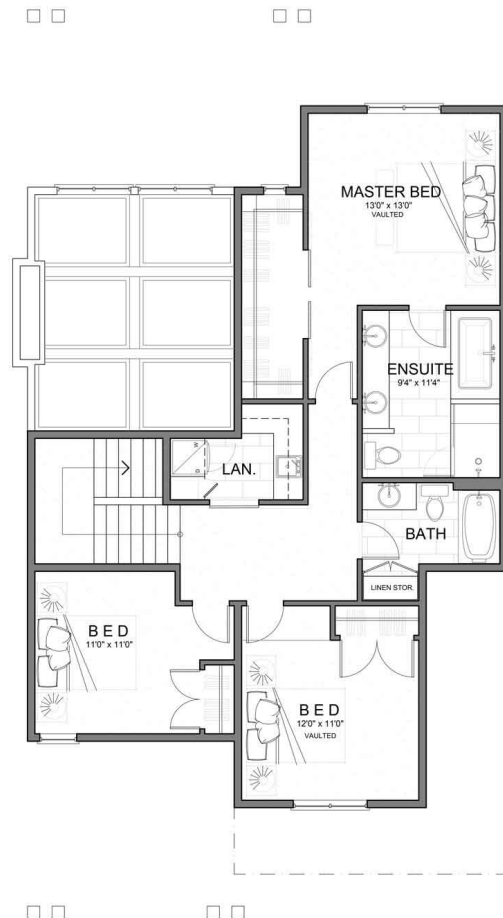
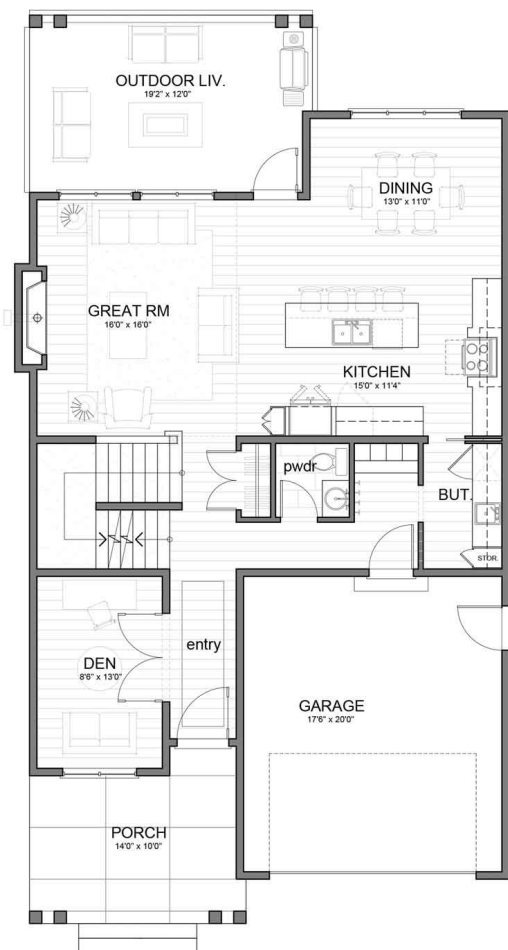
Each of our plans feature the best of curb appeal, functionality and natural light. Our homes have been carefully planned with distinct entry, living and sleeping spaces, large kitchens and dining areas, beautiful sight lines, luxurious bathrooms, and utility zones that offer storage solutions for life's clutter.

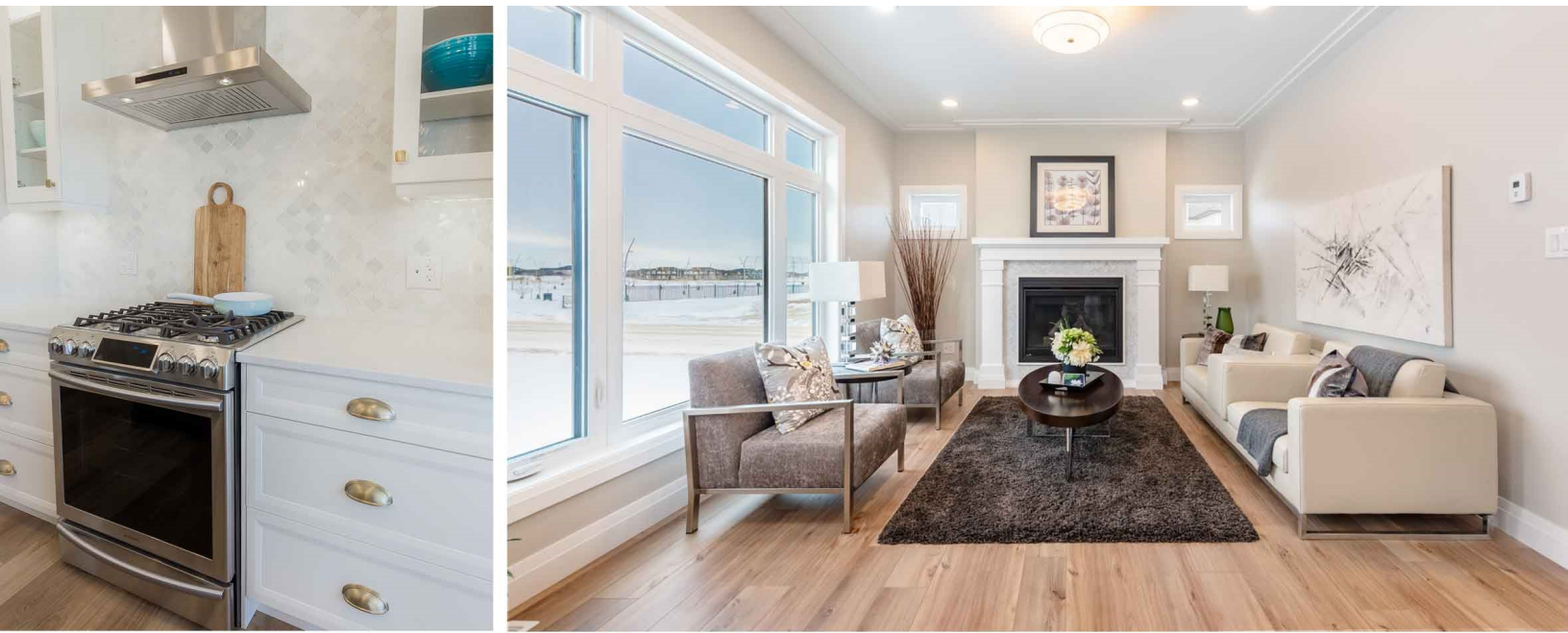
Every home should tell the story of the family that lives there. Our build starts with getting to know you and understanding your style. Choose one of our thoughtfully designed signature plans and personalize it by selecting your preferred layout and exterior. We'll incorporate best practices in energy efficiency and construction techniques, and help you select your interior features and finishes from a carefully edited menu to create a home that feels timeless and fresh.

Floor Plan

Main floor: 1073 sf

Second floor: 973 sf





Exterior



DH DELONIX
— HOMES —